

BS11 Stavex

Dome head · Stainless steel body · Stainless steel stem · Multi-grip
3.2 mm (1/8") - 4.8 mm (3/16")

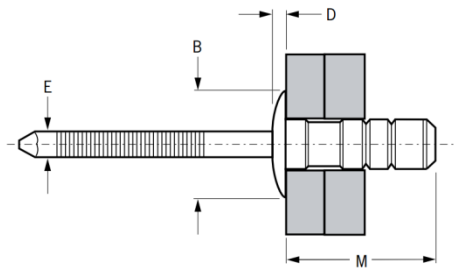
Features

- High shear and tensile strength provides strong, vibration resistant joints
- Multi-grip capability accommodates wide variations in material thickness
- Stainless steel material provides high corrosion resistance and is ideal for applications requiring elevated temperatures
- Good hole fill compensates for irregular, oversized, slotted or misaligned holes and can stop movement in non-standard holes
- Provides a large blind side bearing area against the rear sheet
- Retained stem avoids damage, electrical problems or rattling caused by loose stems
- Spreads the tail bearing load/clamp load on the rear sheet making it ideal for use in thin sheet materials

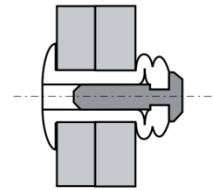


Material

- Body: Stainless steel 304, polished
- Stem: Stainless steel 304, natural



Before Placement



After Placement

Part No.	Size ø	Grip Range		Hole Size		M	øB	D	øE	Shear (min.)	Tension (min.)
	nom.	min.	max.	min.	max.	max.	max.	max.	max.	kN	kN
OBS11-00414	3.2 (1/8")	1.0	6.0	3.3	3.4	14.5	7.3	1.0	2.2	1.62	1.98
OBS11-00516	4.0 (5/32")	2.0	8.0	4.1	4.2	16.0	8.2	1.4	2.9	2.43	3.24
OBS11-00618	4.8 (3/16")	1.5	9.0	4.9	5.0	17.1	10.1	1.6	3.1	4.14	4.50



Can't find what you are looking for?

We can provide customized finishing and colouring.
Contact your nearest [Gripwell](#) team for assistance!